

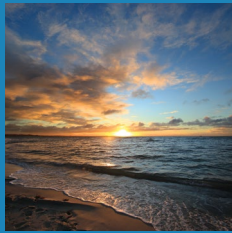


TOOTGAROOK
WETLANDS
cottage

tootgarookwetlandscottage.com.au

VENTURING OUT & ABOUT...

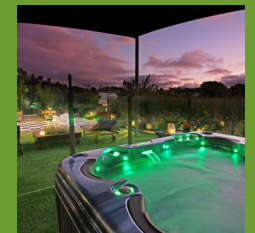
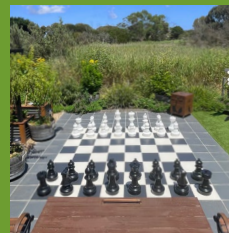
A great central location from which to explore all the Mornington Peninsula has to offer.



The Mornington Peninsula is an easy one and a half hour's drive from Melbourne CBD and a popular lifestyle destination whether you're seeking adventure or relaxation. The cottage is a four minute drive (10-15 min walk) from the Capel Sound Foreshore beach in Capel Sound (*formerly called Rosebud West*). Grab some fresh air and start exploring the charms of the Peninsula including boutique wineries, restaurants, the coffee culture, galleries, markets, shopping, bay or surf beaches, golf courses, scenic national parks, sunsets, spa retreats and so much more...

STICKING AROUND...

Unwind, reconnect and refresh in the cottage and enjoy a unique escape with views of the Wetlands.



No need to pack your whole house to enjoy your getaway, you will find a detailed list on the following page of all inclusions and extra treats. So kick back and start your leisurely day with a continental breakfast (hamper), a game of giant chess, chill out on the sunlounges with a book or enjoy a coffee on the deck or peruse the edible garden. Finish the day with a BBQ and a soak in the heated outdoor spa then relax in front of the gas log fire watching TV or playing a game.



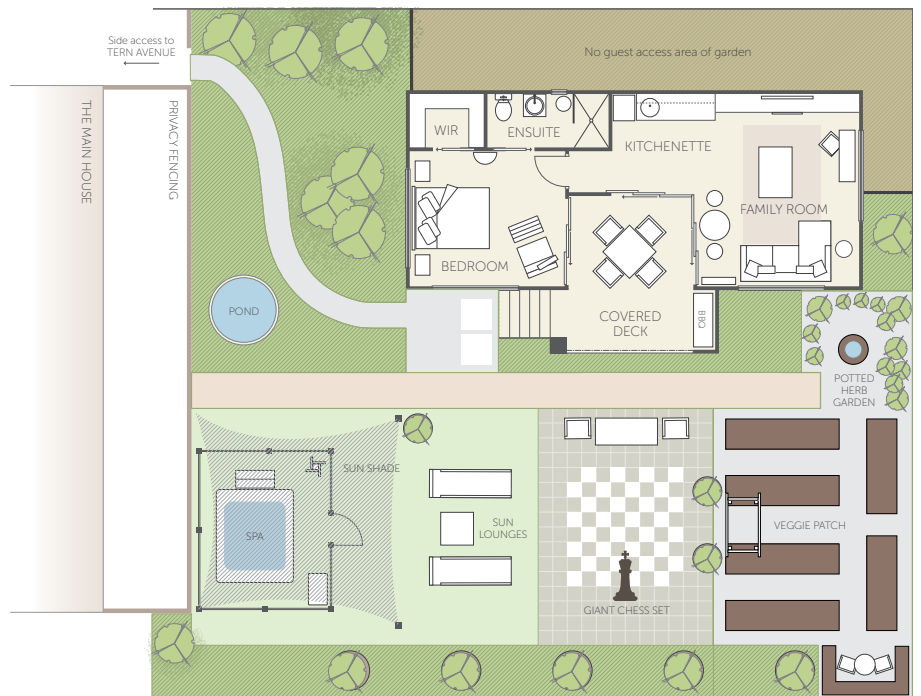
THE COTTAGE

HIGHLIGHTED INCLUSIONS

- Continental Breakfast Hamper
- Nespresso coffee machine with pods
- Wi-Fi Internet & Foxtel
- Bathrobes
- Pillow menu, chocolates & all linen provided
- Late checkout of 11am

AND

- Use of the heated outdoor 3-seater spa with bathrobes & beach towels
- Giant chess
- Edible garden, with potted herb garden



OVERVIEW



- 1 bedroom, self-contained, contemporary styled cottage
- Indoor/outdoor living with sliding patio doors open off bedroom, kitchenette & family room
- Covered deck with 4-seater table setting, ceiling fan & sun blind
- Air Conditioner (Reverse Cycle)
- Variety of outdoor settings, sun lounges & sun shade
- Giant outdoor chess set
- Gated off street parking for boat or caravan (by prior arrangement)

COOK & CLEAN



- 2-seater café table
- Refrigerator / freezer
- Dishwasher
- BBQ with side burner
- Microwave & Multi Oven
- Electric fry pan
- Portable induction plate
- Sandwich press & toaster
- Kettle, juicer & filtered water jug
- Cooking/dining implements & selection of condiments
- Environmentally friendly cleaning products, vacuum, iron & ironing board

ENTERTAIN



- Chaise lounge
- Gas log fire
- 55" Television
- Blu-ray DVD
- Foxtel (Cable TV)
- Free Wi-Fi
- Local scenery & walks books
- Reading books
- Binoculars
- Variety of board games
- Children's books & toys
- Desk with tourist info folder, guest directory & Peninsula tourist magazines/maps

REST & REFRESH



- Queen sized bed
- Fresh white linen & king quilt
- Variety of pillow options
- Electric blankets
- Ceiling fan
- Ensuite with shower
- Bath sheets, towels & mat
- Bath robes & throws
- Hairdryer
- Walk-in-robe
- Portable folding bed (single)
- Portacot 3 in 1 (cot, bassinet, changetable) & a highchair

CONTACT

TOOTGAROOK WETLANDS COTTAGE

address: Tern Avenue, Capel Sound (formerly Rosebud West), Victoria 3940

mail: P.O.Box 2134 Rosebud Plaza, Rosebud, Victoria 3939

phone: 0409 388 585

e-mail: info@tootgarookwetlandscottage.com.au

Your hosts Karen & Dan

For more photo, rates and availability please contact owner or visit:



tootgarookwetlandscottage.com.au



@tootgarook.wetlands.cottage

